



Wednesday, 7 February 2007

The Manager, Companies
Australian Stock Exchange

PROGRESS REPORT NO. 6

CRUX-2 APPRAISAL WELL IN EXPLORATION PERMIT AC/P23

Please refer attached announcement.

Yours sincerely,

Susan Robutti
Company Secretary



PROGRESS REPORT NO. 6

CRUX-2 APPRAISAL WELL IN EXPLORATION PERMIT AC/P23

Progress Update

Nexus Energy Ltd advises that the Crux-2 well in permit AC/P23, in the Browse basin has reached a depth of 3,830 m RT and is drilling ahead towards the planned total depth of 4,145 m RT.

To date, drilling in Crux-2 has not intersected the uppermost 'A' gas reservoir structure encountered in the Crux-1 discovery well.

Drilling towards the well's planned total depth is continuing as planned to establish the presence of the lower 'B' reservoir sand.

Based on the outcome of further drilling and a full evaluation of well logs Nexus is considering side-tracking the Crux-2 well to a location on the field where seismic data indicates both the A and B reservoir sands are present.

The Crux-2 well was designed to test the north-eastern extent of the Crux gas/condensate field to test an upside scenario and expand the volume of known hydrocarbon resources to the interpreted limit of the field.

Nexus will issue further updates on the Crux-2 well and results as they become available. A complete analysis of results for the Crux-2 well will be made available when the entire zone of interest has been drilled, logged and interpreted.

Participants

Nexus Energy WA Pty Ltd (100%)

Location

The Crux-2 well is located in AC/P23, in the offshore Browse Basin, Western Australia.

Longitude 124 deg 28' 4.25" E
Latitude 12 deg 56' 50.18" S

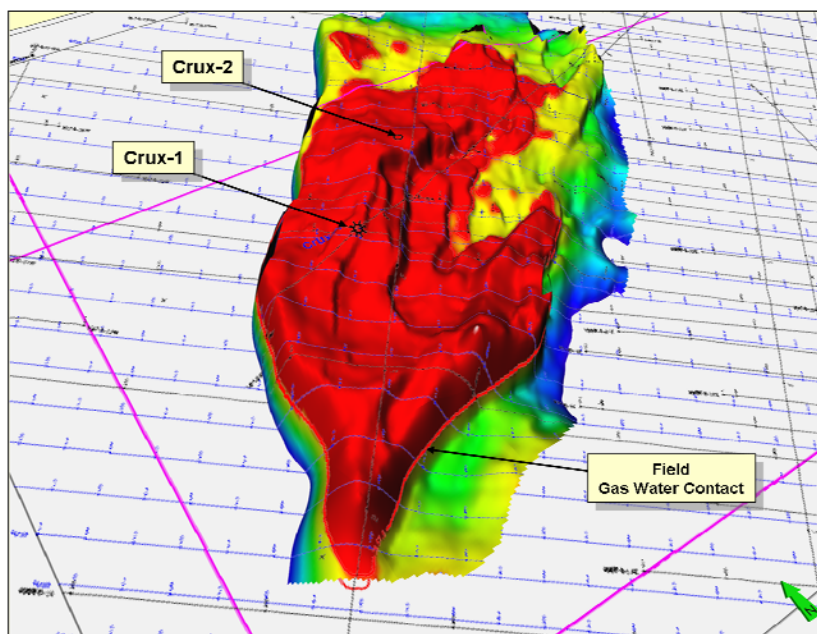


Location Map Crux Field – AC/P23

Crux-2 Well Details

Nexus has designed the well to appraise and test an upside scenario and expand the volume of the known Crux gas liquids resource to enable a development decision on its 100% owned Crux liquids project scheduled for mid 2007. If successful, the well will be the first of six development wells planned on the field to recover an expected 71 million barrels (Nexus best estimate contingent recoverable resources) of condensate (a high value premium light oil).

The Crux-2 well is located two kilometres northeast of the Crux-1 discovery well, which encountered a 244 metre gas column in high quality Triassic aged reservoirs.



Crux Field Perspective View
Location of Crux-2 Well - 3D Field Image

For further information please contact:

Ian Tchacos David Griffiths

Managing Director

Phone: 03 9660 2500

Fax: 03 9654 9303

Website: www.nexusenergy.com.au

Gryphon Management Australia

Phone: 08 9382 8300

Mobile: 0419 912 496

Website: www.gryphon.net.au

Or

Ian Howarth

Farrington National

Phone: 03 9223 2465

Mobile: 0407 822 319

Background on the Crux Field

The field is 100 kilometres north east of the 100% Nexus owned permit WA-377-P which contains the Echuca Shoals gas discovery, adjacent to Inpex's Ichthys gas field; currently being considered for development as an LNG project.

A 3D seismic survey acquired by Nexus earlier this year indicates that the field contains a best estimate contingent recoverable condensate resource of 71 MMstb.

Early in 2006 Nexus sold the rights to the gas (excluding condensate) in the Crux field to Shell for US\$40 million.

Sale of condensate from the field has the potential to provide significant value to Nexus' shareholders and this opportunity has been vigorously pursued since the field was acquired.

The gas sales agreement provides for Nexus to be able to execute its condensate recycle project until 31 December 2020 at which time Shell will take ownership of the permit and will be able to extract the gas and any remaining condensate.

Nexus expects that it will be in a position to sanction the project by mid 2007 with first condensate being produced during the third quarter of 2009.

Nexus envisages a gas recycling scheme for the Crux liquids project with approximately 960 MMscf/d being produced through three production wells. Over 25,000 stb/d of condensate would be stripped from the gas, it is compressed and re-injected into the reservoir through three injection wells.

The wells are to be tied back to a floating production, storage and offloading facility (FPSO).